

Figure 1: Effect of Re-number on Shuttle Orbiter on C_N for body flap 0 degrees

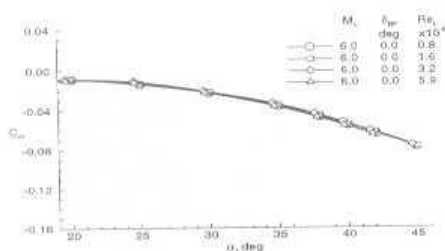


Figure 2: Effect of Re-number on Shuttle Orbiter on C_m for body flap 0 degrees

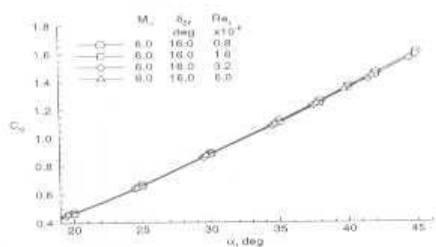


Figure 3: Effect of Re-number on Shuttle Orbiter on C_N for body flap 16 degrees

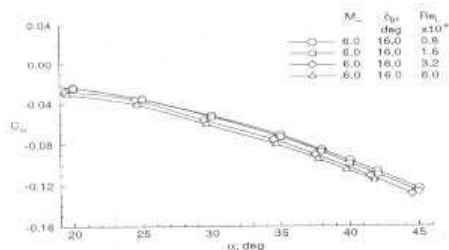


Figure 4: Effect of Re-number on Shuttle Orbiter on C_m for body flap 16 degrees

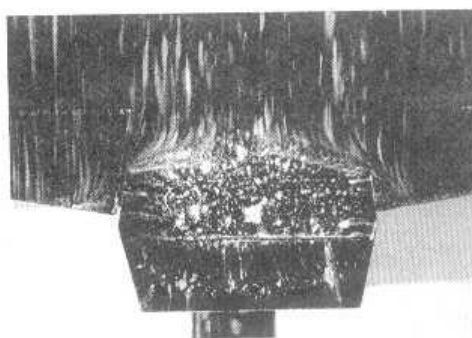


Figure 5: Oil flow for $Re_L = 0.4 \times 10^6$



Figure 6: Oil flow for $Re_L = 0.8 \times 10^6$

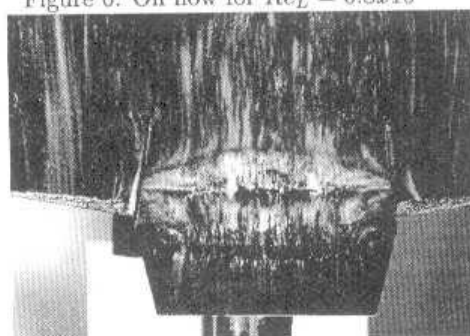


Figure 7: Oil flow for $Re_L = 1.6 \times 10^6$

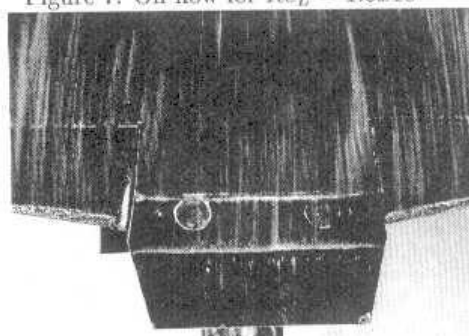


Figure 8: Oil flow for $Re_L = 3.2 \times 10^6$