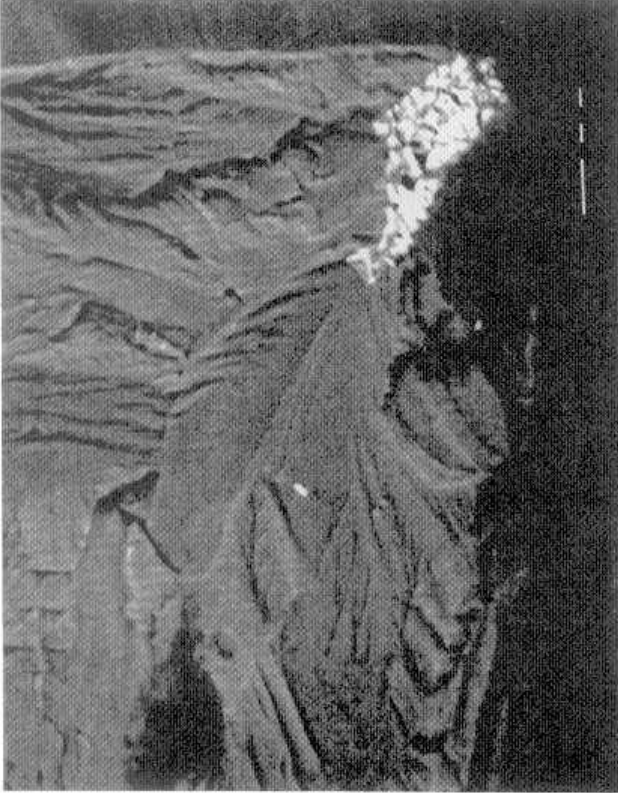


1990 pedigree plate  
Pore size = 0.0044 in.



Low porosity plate  
Const. part. size = 0.0019 in.

**Figure 8: Typical open-hole specimen fatigue fractures of 7050-T7451 thick plate showing microporosity at the failure origin of the 1990 plate variant and a constituent particle at the origin of the low porosity variant.**