

Figure 18: default mission variables

12. *PSF model.* The final model is the PSF model. The user selects and types in the expressions which form the Performance Shaping Model. Each individual Performance Shaping Function can be associated with a specific set of Taxons and Mean Task Time, Task error rate or be an intermediate function. The top level dialogue associated with the PSF model is displayed in Figure 19.

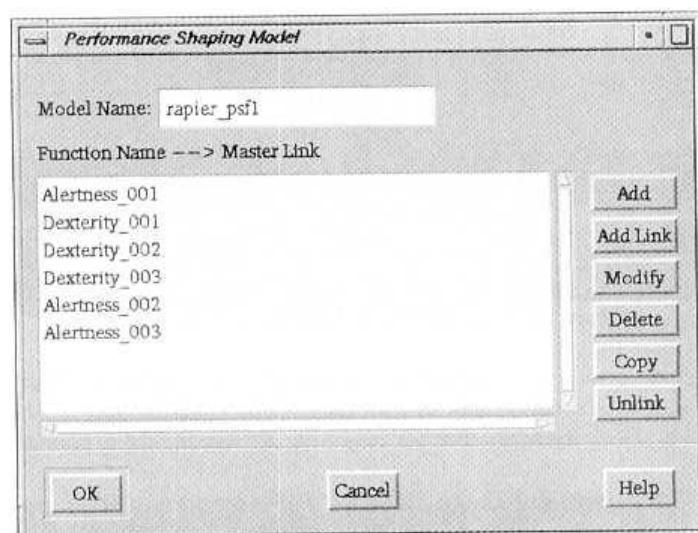


Figure 19: Top level Performance Shaping Model screen