

Figure 4

The model will ask for a filename - enter any valid text string.

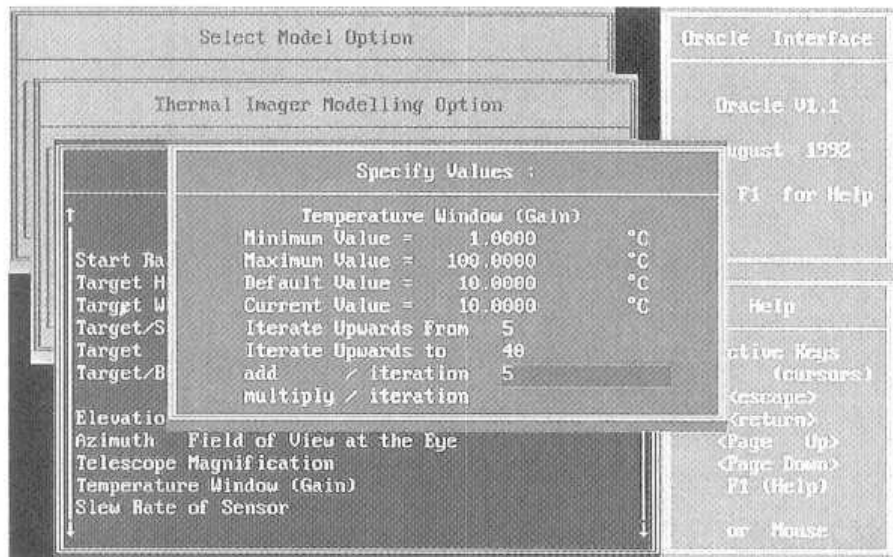


Figure 5

7) The model will run through the iterations and produce a graphical output of the acquisition probability associated with each gain option. Press "enter" to continue. You will be asked if you wish to see the output data. As they are saved to file this

is not essential. At this point the default graph is for target acquisition probability against time.

8) If you wish to see alternative data plots, go to the Utility menu and select, for example, the "plot acquisition probability vs range" option (Figure 6)