

definition of resource/interface channels is made simply by clicking in the appropriate box with the mouse. If there were multiple operators, the channels would need to be defined for each operator.

Next, the resource interface channels defined above need to be associated with tasks that require those resource interface channels using the interface as shown in Figure 14.

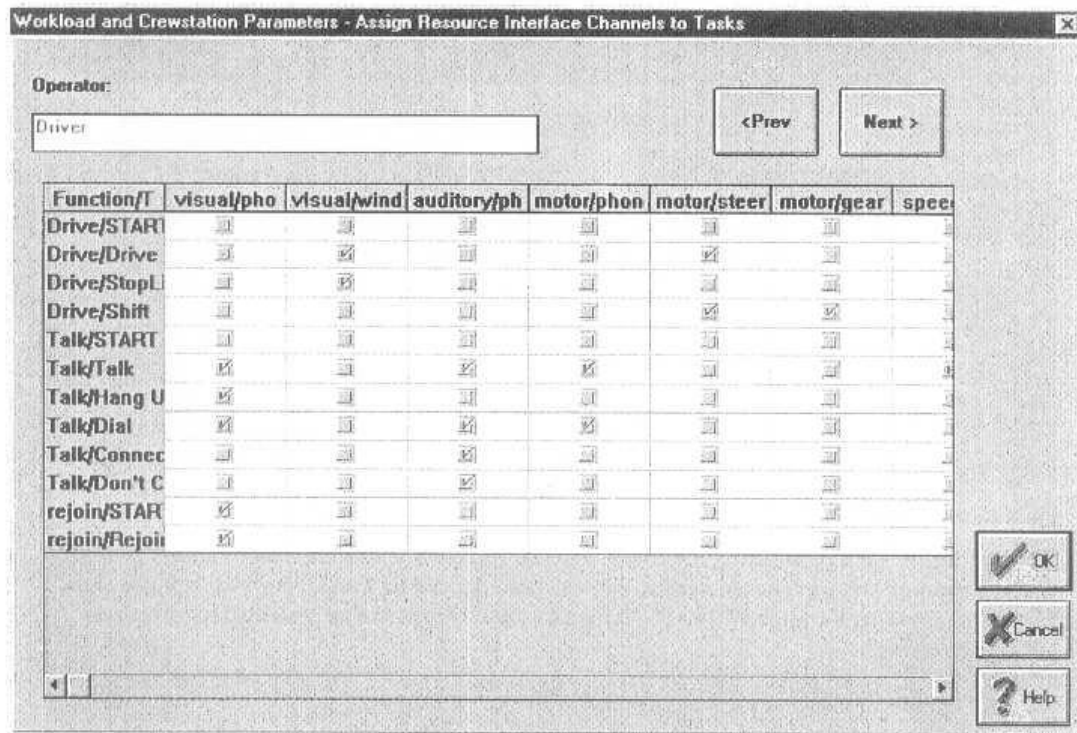


Figure 14. Associating Resource Interface Channels with Tasks

Each task included in the model is listed as a row and each resource interface pair is listed as a column. The resource interface pairs that are used for each task are defined by clicking in the checkbox. Again, if there were other operators, these would be defined uniquely for each operator.

Also, the single task demand values for each resource interface pair must be defined as shown in Figure 15.