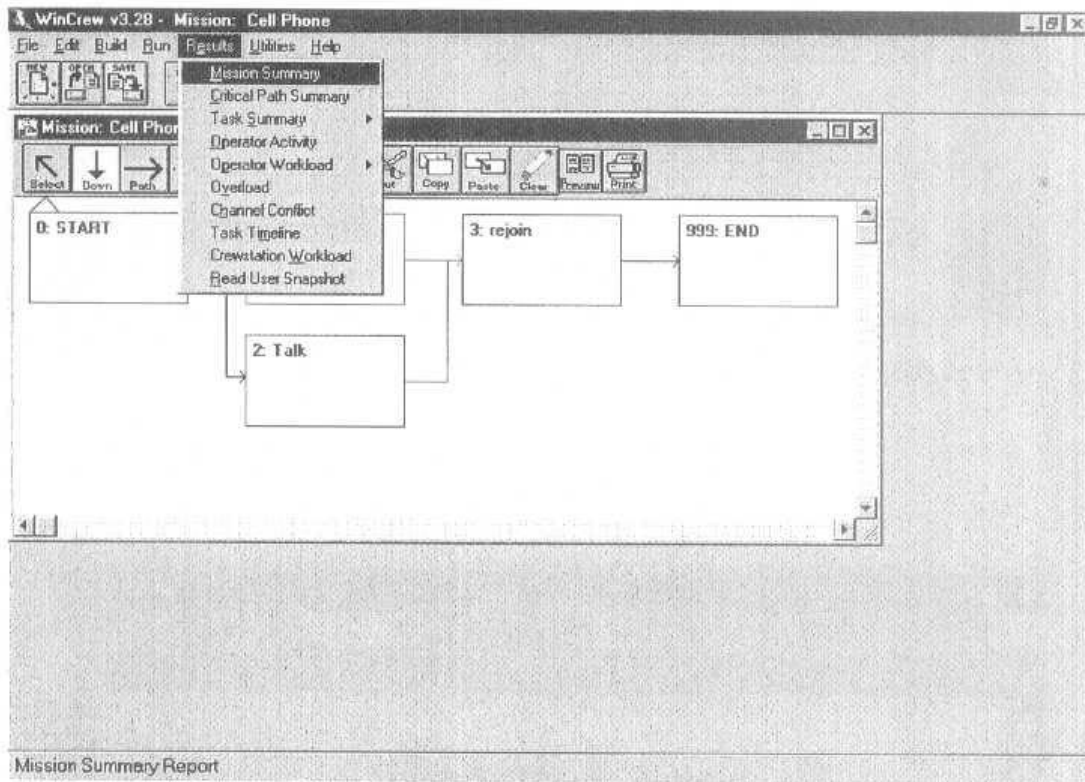


In complex models, animation can be helpful in determining tasks that must often be performed simultaneously. In a relatively simple model such as this, it may not be needed.

The types of reports available to the user are shown in Figure 20.



**Figure 20. List of Reports Available from Results Menu**

For this model, the interesting reports are the Task Summary, Operator Activity, Operator Workload, Overload, Channel Conflict, and Task Timeline. All or portions of each of these reports are presented in Figures 21 through 26, respectively.